

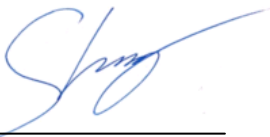
XIAMEN JIMEI YUANHONGXIN PACKING MATERIAL PLANT
 NO.277 XINBEI ERLI JIMEI DISTRICT XIAMEN

The following sample(s) was/were submitted and identified on behalf of the client as:

Sample Description : MILDEW TABLETS
 SGS Ref No. : XMN15-000899
 Sample Receiving Date : Jan. 29, 2015
 Test Performing Date : Jan. 29, 2015 to Feb. 4, 2015
 Test Performed : Selected test(s) as requested by applicant
 Test Result(s) : For further details, please refer to the following page(s)

Test Requested	Result
To determine Content(s) of Cadmium(Cd), Lead(Pb), Mercury(Hg), Hexavalent Chromium(CrVI), PBBs & PBDEs in the selected parts on the submitted sample(s) with reference to RoHS Directive 2011/65/EU Annex II; recasting 2002/95/EC.	PASS

Signed for and on behalf of
 Xiamen Brach, SGS-CSTC Co., Ltd.



Sharky Xia
 Approved Signatory



This document is issued by the Company subject to its General Conditions of Service printed overleaf, available on request or accessible at <http://www.sgs.com/en/Terms-and-Conditions.aspx> and, for electronic format documents, subject to Terms and Conditions for Electronic Documents at <http://www.sgs.com/en/Terms-and-Conditions/Terms-e-Documents.aspx>. Attention is drawn to the limitation of liability, indemnification and jurisdiction issues defined therein. Any holder of this document is advised that information contained hereon reflects the Company's findings at the time of its intervention only and within the limits of Client's instructions, if any. The Company's sole responsibility is to its Client and this document does not exonerate parties to a transaction from exercising all their rights and obligations under the transaction documents. This document cannot be reproduced except in full, without prior written approval of the Company. Any unauthorized alteration, forgery or falsification of the content or appearance of this document is unlawful and offenders may be prosecuted to the fullest extent of the law. Unless otherwise stated the results shown in this test report refer only to the sample(s) tested and such sample(s) are retained for 30 days only.

Attention: To check the authenticity of testing /inspection report & certificate, please contact us at tel ephone: (86-755)83071443, or e-mail: CN.Doccheck@sgs.com

SGS-CSTC Standards Technical Services Co., Ltd.
 Xiamen Branch, Xiang'an Torch Industrial Zone, Xiamen, Fujian Province, China

No.31 Xianghong Road, Xiang'an Torch Industrial Zone, Xiamen, Fujian Province, China 361101 t (86-592) 5766537 f (86-592) 5766460 www.sgsgroup.com.cn
 中国·福建·厦门·火炬(翔安)产业区翔虹路31号 邮编: 361101 t (86-592) 5766537 f (86-592) 5766460 e sgs.china@sgs.com

Test Results :

Test Part Description :

Specimen No.	SGS Sample ID	Description
SN1	XMN15-000899.001	Green sheet

Remarks :

- (1) 1 mg/kg = 0.0001%
- (2) MDL = Method Detection Limit
- (3) ND = Not Detected (< MDL)
- (4) "-" = Not Regulated

RoHS Directive 2011/65/EU

- Test Method :
- (1)With reference to IEC 62321-5:2013, determination of Cadmium by ICP-OES.
 - (2)With reference to IEC 62321-5:2013, determination of Lead by ICP-OES.
 - (3)With reference to IEC 62321-4:2013, determination of Mercury by ICP-OES.
 - (4)With reference to IEC 62321:2008, determination of Hexavalent Chromium by Colorimetric Method using UV-Vis.
 - (5)With reference to IEC 62321:2008, determination of PBBs and PBDEs by GC-MS.

Test Item(s)	Limit	Unit	MDL	001
Cadmium (Cd)	100	mg/kg	2	ND
Lead (Pb)	1000	mg/kg	2	9
Mercury (Hg)	1000	mg/kg	2	ND
Hexavalent Chromium (CrVI)	1000	mg/kg	2	ND
Sum of PBBs	1000	mg/kg	-	ND
Monobromobiphenyl	-	mg/kg	5	ND
Dibromobiphenyl	-	mg/kg	5	ND
Tribromobiphenyl	-	mg/kg	5	ND
Tetrabromobiphenyl	-	mg/kg	5	ND
Pentabromobiphenyl	-	mg/kg	5	ND
Hexabromobiphenyl	-	mg/kg	5	ND
Heptabromobiphenyl	-	mg/kg	5	ND
Octabromobiphenyl	-	mg/kg	5	ND
Nonabromobiphenyl	-	mg/kg	5	ND
Decabromobiphenyl	-	mg/kg	5	ND
Sum of PBDEs	1000	mg/kg	-	ND
Monobromodiphenyl ether	-	mg/kg	5	ND
Dibromodiphenyl ether	-	mg/kg	5	ND
Tribromodiphenyl ether	-	mg/kg	5	ND



This document is issued by the Company subject to its General Conditions of Service printed overleaf, available on request or accessible at <http://www.sgs.com/en/Terms-and-Conditions.aspx> and, for electronic format documents, subject to Terms and Conditions for Electronic Documents at <http://www.sgs.com/en/Terms-and-Conditions/Terms-e-Documents.aspx>. Attention is drawn to the limitation of liability, indemnification and jurisdiction issues defined therein. Any holder of this document is advised that information contained hereon reflects the Company's findings at the time of its intervention only and within the limits of Client's instructions, if any. The Company's sole responsibility is to its Client and this document does not exonerate parties to a transaction from exercising all their rights and obligations under the transaction documents. This document cannot be reproduced except in full, without prior written approval of the Company. Any unauthorized alteration, forgery or falsification of the content or appearance of this document is unlawful and offenders may be prosecuted to the fullest extent of the law. Unless otherwise stated the results shown in this test report refer only to the sample(s) tested and such sample(s) are retained for 30 days only.

Attention: To check the authenticity of testing /inspection report & certificate, please contact us at tel ephone: (86-755)83071443, or e-mail: CN.Doccheck@sgs.com

SGS-CTI Standards Technical Services Co., Ltd.
Xiamen Branch Xiamen Torch Industrial Zone, Xiamen, Fujian Province, China

No.31 Xianghong Road, Xiang'an Torch Industrial Zone, Xiamen, Fujian Province, China 361101 t (86-592) 5766537 f (86-592) 5766460 www.sgs.com.cn
中国·福建·厦门·火炬(翔安)产业区翔虹路31号 邮编: 361101 t (86-592) 5766537 f (86-592) 5766460 e sgs.china@sgs.com

Tetrabromodiphenyl ether	-	mg/kg	5	ND
Pentabromodiphenyl ether	-	mg/kg	5	ND
Hexabromodiphenyl ether	-	mg/kg	5	ND
Heptabromodiphenyl ether	-	mg/kg	5	ND
Octabromodiphenyl ether	-	mg/kg	5	ND
Nonabromodiphenyl ether	-	mg/kg	5	ND
Decabromodiphenyl ether	-	mg/kg	5	ND

Notes :

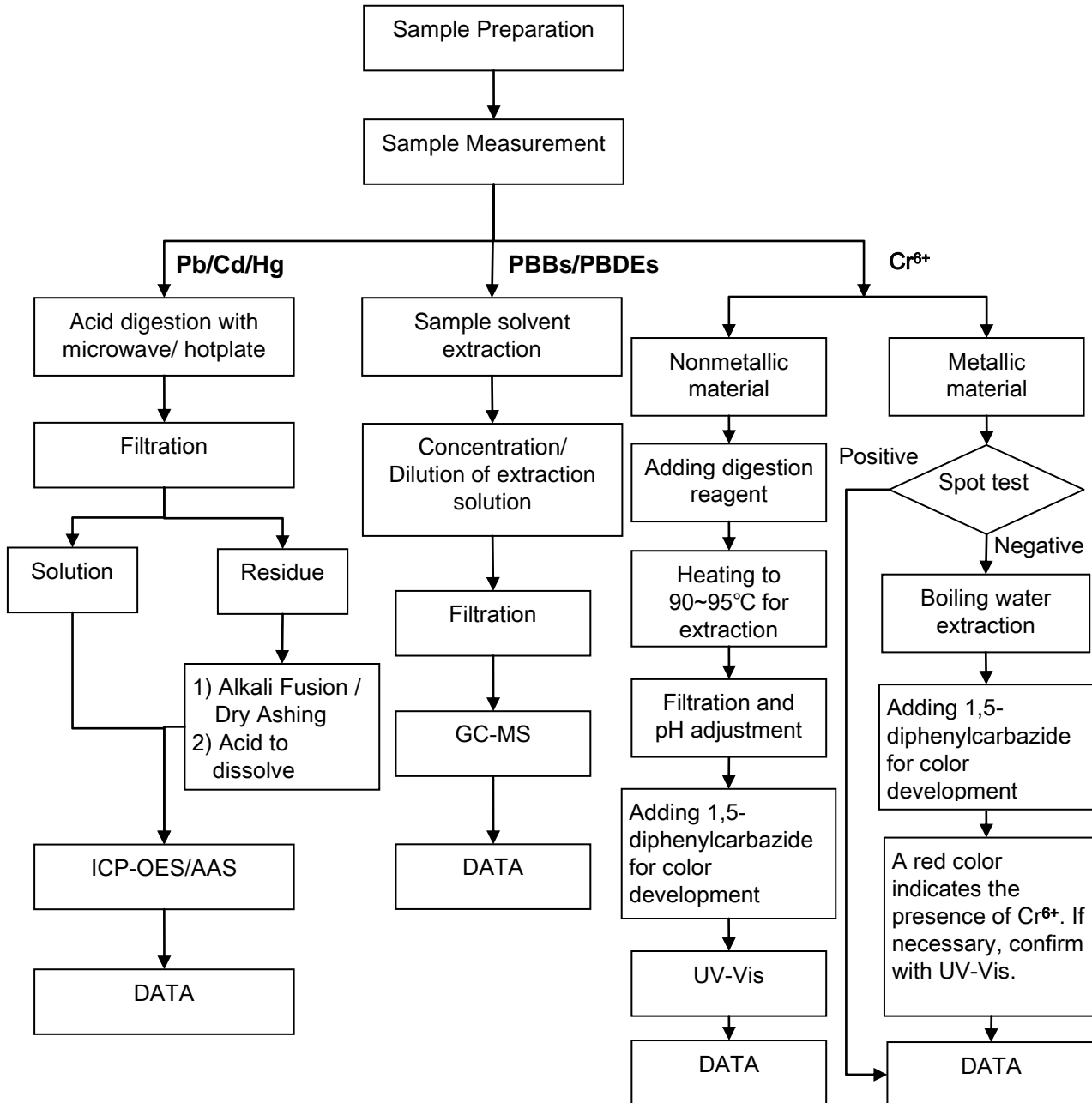
- (1) The maximum permissible limit is quoted from the directive 2011/65/EU, Annex II



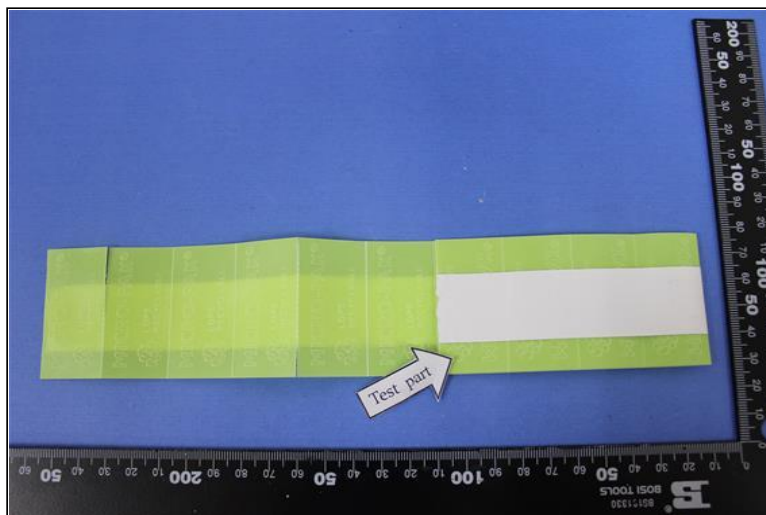
ATTACHMENTS

RoHS Testing Flow Chart

- 1) Name of the person who made testing: Michael Tso / Cutey Yu
- 2) Name of the person in charge of testing: Adams Yu / Yolanda Wei
- 3) These samples were dissolved totally by pre-conditioning method according to below flow chart (Cr⁶⁺ and PBBs/PBDEs test method excluded)



Sample photo(s):



XMN15-000899.001

Product photo

The testing report/certificate only refers to the sample(s) tested.

End of Report